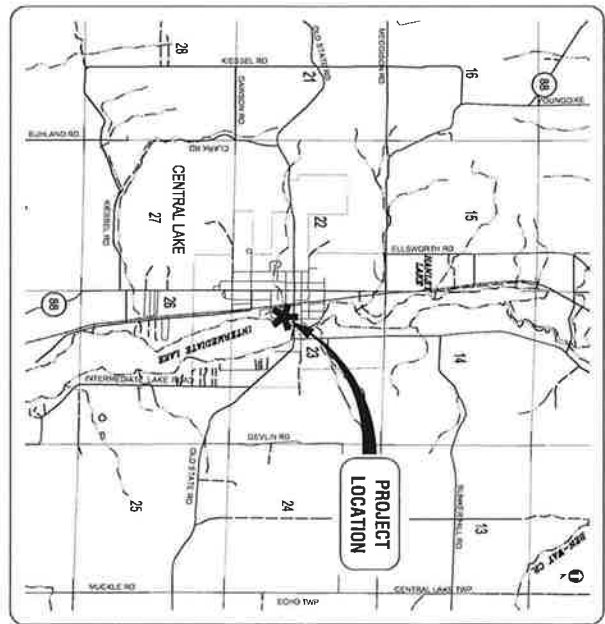


- UNIVERSAL ACCESS DESIGN FEATURES:**
- BOARDWALK EDGE TREATMENTS TO PREVENT ROLL OFF.
 - SITTING BENCHES TO BE PROVIDED.
 - TRANSITION PLATES BETWEEN SIDEWALKS AND BOARDWALK.
 - ACCESSIBLE RESTROOM TO BE PROVIDED.
 - 8 FOOT WIDE BOARDWALK FOR SIDE BY SIDE MOVEMENT.
- ENVIRONMENTALLY FRIENDLY FEATURES:**
- LANDSCAPING WITH NATIVE PLANT MATERIALS.
 - RECYCLING BINS ON SITE.
 - FLOATING DOCKS TO REDUCE BOTTOM LANDS DISTURBANCE.



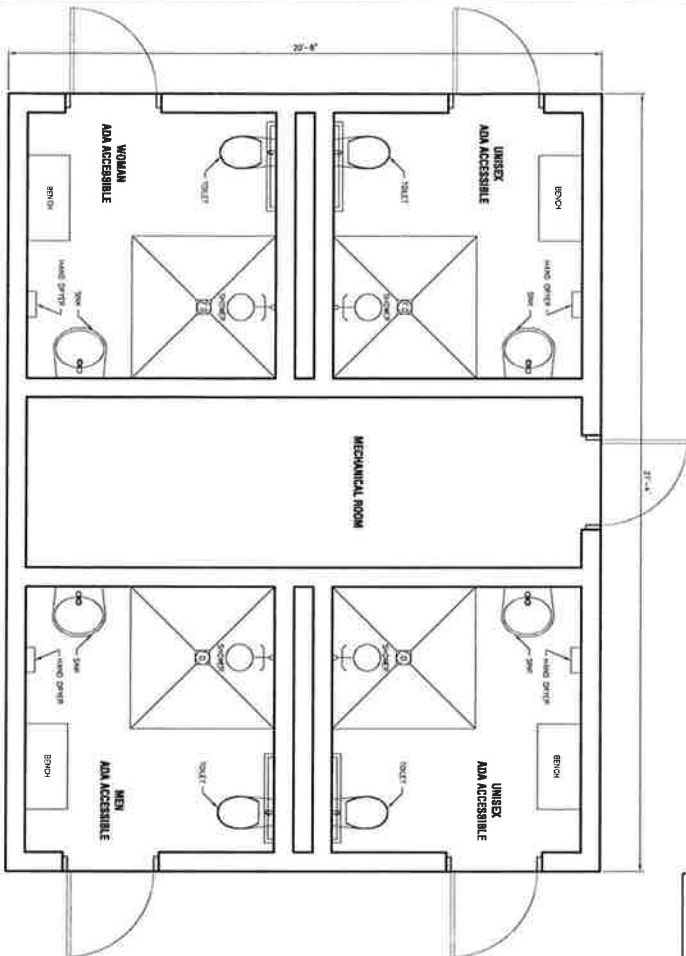
LOCATION MAP
VILLAGE OF CENTRAL LAKE TOWNSHIP, ANTRIM COUNTY, MICHIGAN

<p>VILLAGE OF CENTRAL LAKE PARK IMPROVEMENTS CONCEPTUAL SITE PLAN SECTION 23, TOWN 31 NORTH, RANGE 8 WEST VILLAGE OF CENTRAL LAKE, ANTRIM COUNTY, MICHIGAN</p>	<p>13045</p> <p>Sht 1 of 1</p>	<p>gfa Gourdie-Fraser Municipal Development Transportation</p>	<p>PH 231 946 5214 FAX 231 946 3703 WWW.gourdiefraser.com 112 W Front Street Troy, MI 48068</p>
--	---------------------------------------	---	---

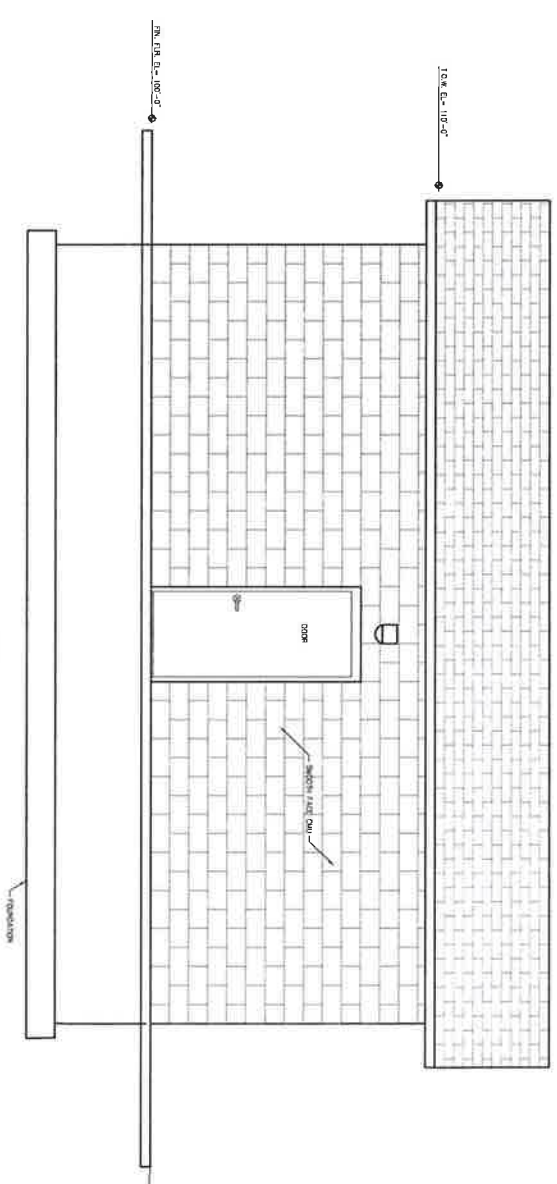
These documents are prepared in accordance with the contractual terms and conditions of this project.

- UNIVERSAL ACCESS DESIGN FEATURES:**
- ALL RESTROOM UNITS TO BE ADA ACCESSIBLE.
 - MULTIPLE UNISEX RESTROOM UNITS.

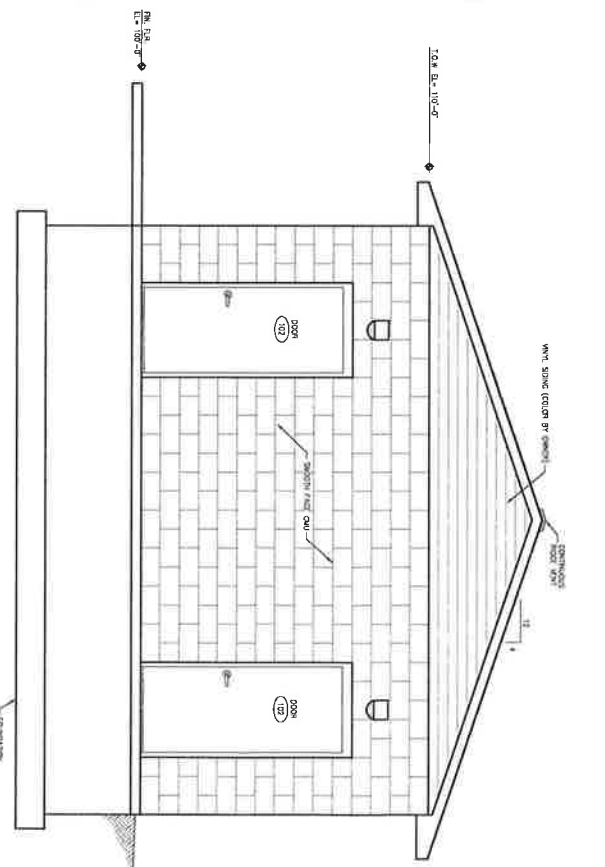
- BUILDING WATER/ENERGY EFFICIENCY FEATURES:**
- LOW WATER TOILETS AND FAUCETS.
 - MOTION ACTIVATED LIGHTING.
 - HAND DRYERS TO REDUCE WASTE.
 - RECYCLING BINS ON SITE.



NORTH ELEVATION



WEST ELEVATION



<p>VILLAGE OF CENTRAL LAKE PARK IMPROVEMENTS CONCEPTUAL BATH HOUSE FLOOR PLAN AND ELEVATION VIEWS SECTION 23, TOWN 31 NORTH, RANGE 4 WEST VILLAGE OF CENTRAL LAKE, ANTRIM COUNTY, MICHIGAN</p>	<p>PH 231 546 5674 FAX 231 546 5703 WWW.gourdie-fraser.com 1223 W Park Street Farmington, MI 48341</p>	<p>gf Gourdie-Fraser Municipal Development Transportation</p>
---	--	--

These documents are created in accordance with the contractual terms and conditions for this project.